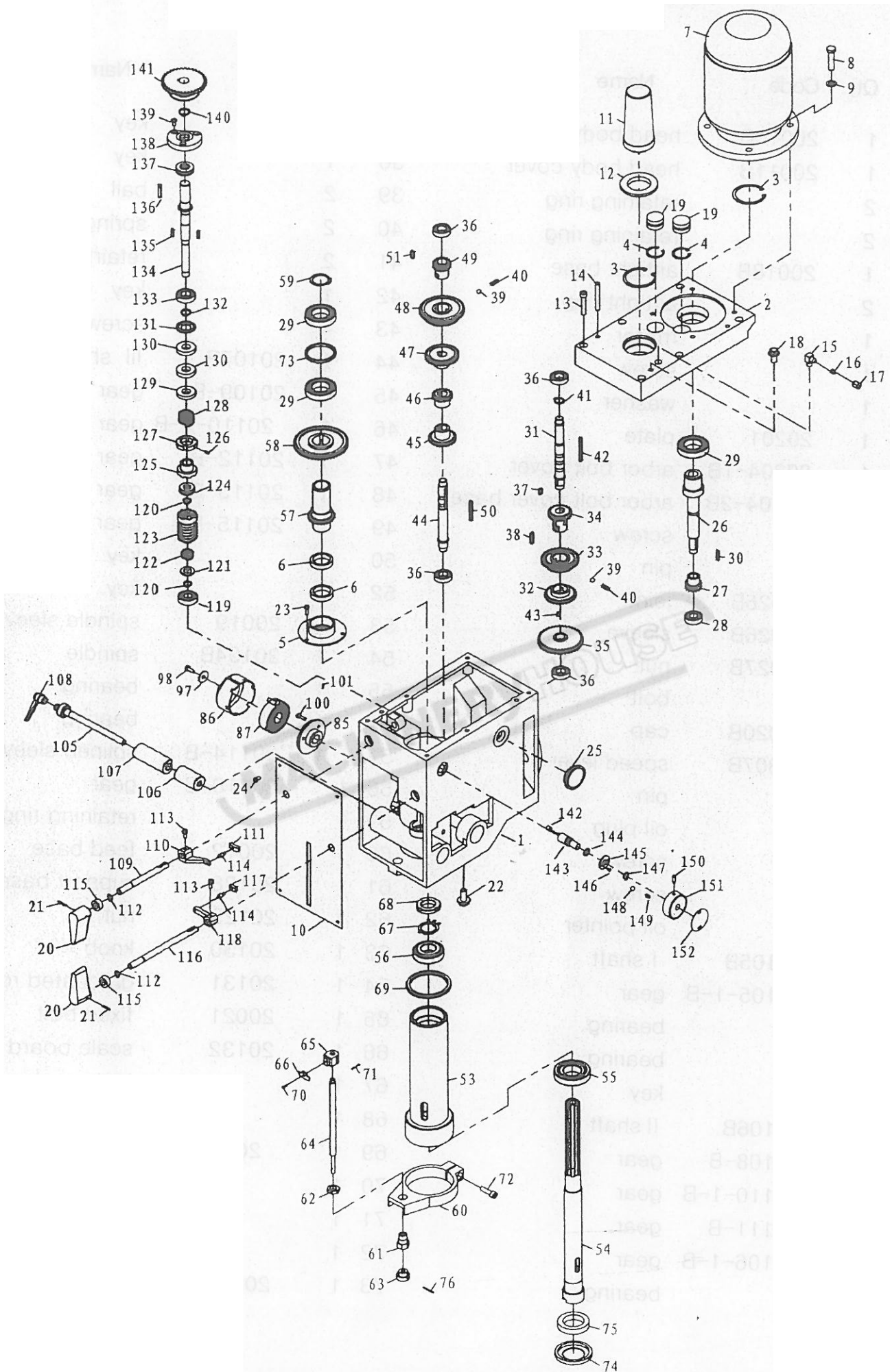


No.	Code	Qty.	Name	No.	Code	Qty.	Name
1	20102	1	Feed box	37	20202	1	Gear
2	20234	1	Pinion shaft	38	20201	1	Speed lever
3	20243	1	Spindle stroke dial	39		1	Steel ball 8
4	20242	1	Clutch bushing set	40		2	Retainer ring 12
5	20241	1	Backing pin	41		1	Spring
6		1	Pin 6×12	42		1	Screw M6×20
7	20247	1	Ball head pin	43	20303	1	Plate
8		2	Pin4×10	44	20206	1	Knurled pin
9	20239	1	Square thread set	45	20204	1	Limited screw
10	20240	1	Square thread nut	46	20233	1	Worm shaft
11	20244	1	Handle body	47	20306	1	Bush
12	20245	2	Washer	48		1	Key
13	20203	1	Handle	49	20228	1	Gear
14	20237	1	Clutch key base set	50	20229	1	Gear
15	20236-2	1	Bush	51	20230	1	Gear
16	20236-1	1	Worm gear	52	20106	1	Bush
17	20231	2	Clutch screw set	53	20227	1	Worm cover
18	20235	2	Screw	54	20305	1	Bush
19	20232	2	Spring	55		1	Screw M6×12
20	20223	1	II Shaft	56		2	ScrewM6×25
21		2	Bearing 6003	57	20107	1	Bushing
22	20215	1	Change gear lever set	58	20226	1	Mirco feed dial
23	20220	1	spring	59	20105	1	Hand wheel
24	20222	1	Pull key	60		1	Handle
25		2	Pin 2×10	61		1	Screw M5×8
26	20304	1	Worm gear	62		1	Locked screw M5×12
27		1	Key 8×16	63	20307	1	"0"Scale
28	20217	4	Bushing	64	20301	2	Knob
29	20218	1	Gear	65		2	Rivet 2×5
30	20219	1	Gear	66		1	Oil cup
31	20221	1	Gear	67	20246	1	Screw
32	20216	1	Bushing bracket	68	20308	2	Pin
33		2	ScrewM4×6	69		1	Locked handle
34		1	Retainer ring 35	70		4	Screw M6×50
35		2	Key 4×8	71		2	Taper pin6×60
36		3	Screw M4×12				



Head parts for spindle power feed

No.	Qty.	Code	Name	No.	Qty.	Code	Name
1	1	20010B	head body	37	1		key
2	1	20011B	head body cover	38	1		key
3	2		retaining ring	39	2		ball
4	2		retaining ring	40	2		spring
5	1	20018B	airtight base	41	2		retaining ring
6	2		airtight ring	42	1		key
7	1		motor	43	4		screw
8	1		screw	44	1	20107B	III shaft
9	1		washer	45	1	20109-B	gear
10	1	20201	plate	46	1	20110-2-B	gear
11	1	20304-1B	arbor bolt cover	47	1	20112-B	gear
12	1	20304-2B	arbor bolt cover base	48	1	20113-B	gear
13	1		screw	49	1	20115-B	gear
14	1		pin	50	1		key
15	1	20025B	joint	52	1		key
16	1	20026B	sleeve	53	1	20019	spindle sleeve
17	1	20027B	nut	54	1	20104B	spindle
18	1		bolt	55	1		bearing
19	2	20020B	cap	56	1		bearing
20	2	20307B	speed lever	57	1	20114-B	splined sleeve
21	2		pin	58	1	20116-B	gear
22	1		oil plug	59	1		retaining ring
23	1		screw	60	1	20012	feed base
24	1		screw	61	1	20128	support base
25	1		oil pointer	62	1	20129	nut
26	1	20105B	I shaft	63	1	20130	knob
27	1	20105-1-B	gear	64	1	20131	graduated rod
28	1		bearing	65	1	20021	fixed bolt
29	3		bearing	66	1	20132	scale board
30	1		key	67	1		lock washer
31	1	20106B	II shaft	68	1		lock nut
32	1	20108-B	gear	69	1	20308	rubber washer
33	1	20110-1-B	gear	70	1		screw
34	1	20111-B	gear	71	1		split pin
35	1	20106-1-B	gear	72	1		bolt
36	4		bearing	73	1	20024B	separating ring

Head parts for spindle power feed

No.	Qty.	Code	Name	No.	Qty.	Code	Name
74	1	20133B	oil tight cover	131	1	20103A	washer
75	1		air tight	132	1		retaining ring
76	1		pin	133	1		bearing
85	1	20118	spring base	134	1	20213A	I shaft
86	1	20123	spring cap	135	2		key
87	1	20122	spring plate	136	1		key
97	1	20102	washer	137	1		bearing
98	1		bolt	138	1	20104A	flange
100	1		screw	139	3		screw
101	2		pin	140	1		retaining ring
105	1	20124B	fixed bolt	141	1	20212A	gear
106	1	20203B	fixed tight block	142	1	20109A	quill
107	1	20202B	fixed tight block	143	1	20214A	lever shaft
108	1		adjust handle	144	1		O-airtight
109	1	20125B	lever shaft	145	1	20250	flange cover
110	1	20022-1B	lever	146	2		screw
111	1	20204-2B	lever bracket	147	1		retaining ring
112	2		retaining ring	148	1		steel ball
113	2		screw	149	1		spring
114	2	20204-3B	lever rod	150	1		screw
115	2		oil seal	151	1	20201	speed lever
116	1	20126B	long lever shaft	152	1	20303	label
117	1	20204-1B	lever bracket				
118	1	20022-2B	lever				
119	1		bearing				
120	2		retaining ring				
121	1		washer				
122	1	20209	spring				
123	1	20207A	worm shaft				
124	1		bearing				
125	1	20208B	clutch base				
126	3		screw				
127	1		locked nut				
128	1	20205B	spring				
129	1	20108A	fixed sleeve				
130	2		oil seal				